

Boardwalk

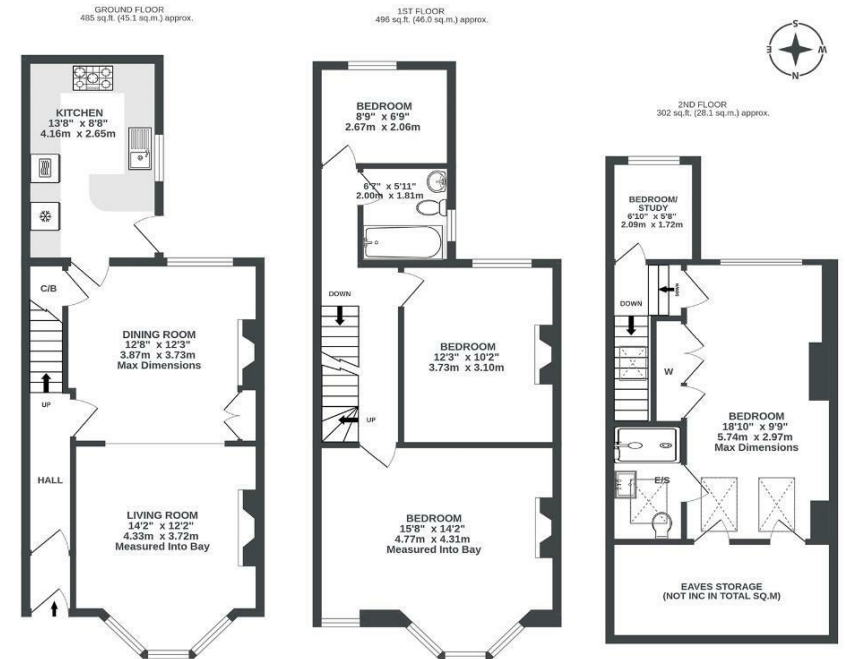
Paultow Avenue

, BRISTOL

Paultow Avenue

BEDMINSTER

APPROXIMATE FLOOR AREA
119.2 SQM / 1283 SQFT



Illustrations are for reference purposes only, measurements are approximate, not to scale.



Boardwalk

Paultow Avenue , BRISTOL



£575,000



BS3 4PR



4 Bedrooms



2 Bathrooms

"Turning into Paultow Avenue on a spring or summer evening is a feeling like no other, the street alive with children's chalk drawings, neighbours catching up, and a real sense of community. Step through the front door and you're welcomed by a tranquil, quiet home with the evening sun streaming through the rear windows."

